

PANTELLERIA

BETWEEN ITALY & AFRICA

A MEDITERRANEAN PARADISE

What is Paradise  
*for you?*



A photograph of a stone wall at night, illuminated by warm, yellow lights. The wall is made of rough, grey stones and has a small blue object on it. The background is dark, suggesting a night scene.

For me, Paradise is a Mediterranean island, a place where life remains simple and authentic, the sea is pristine and inviting, the people are warm and hospitable, and the food is unforgettable.



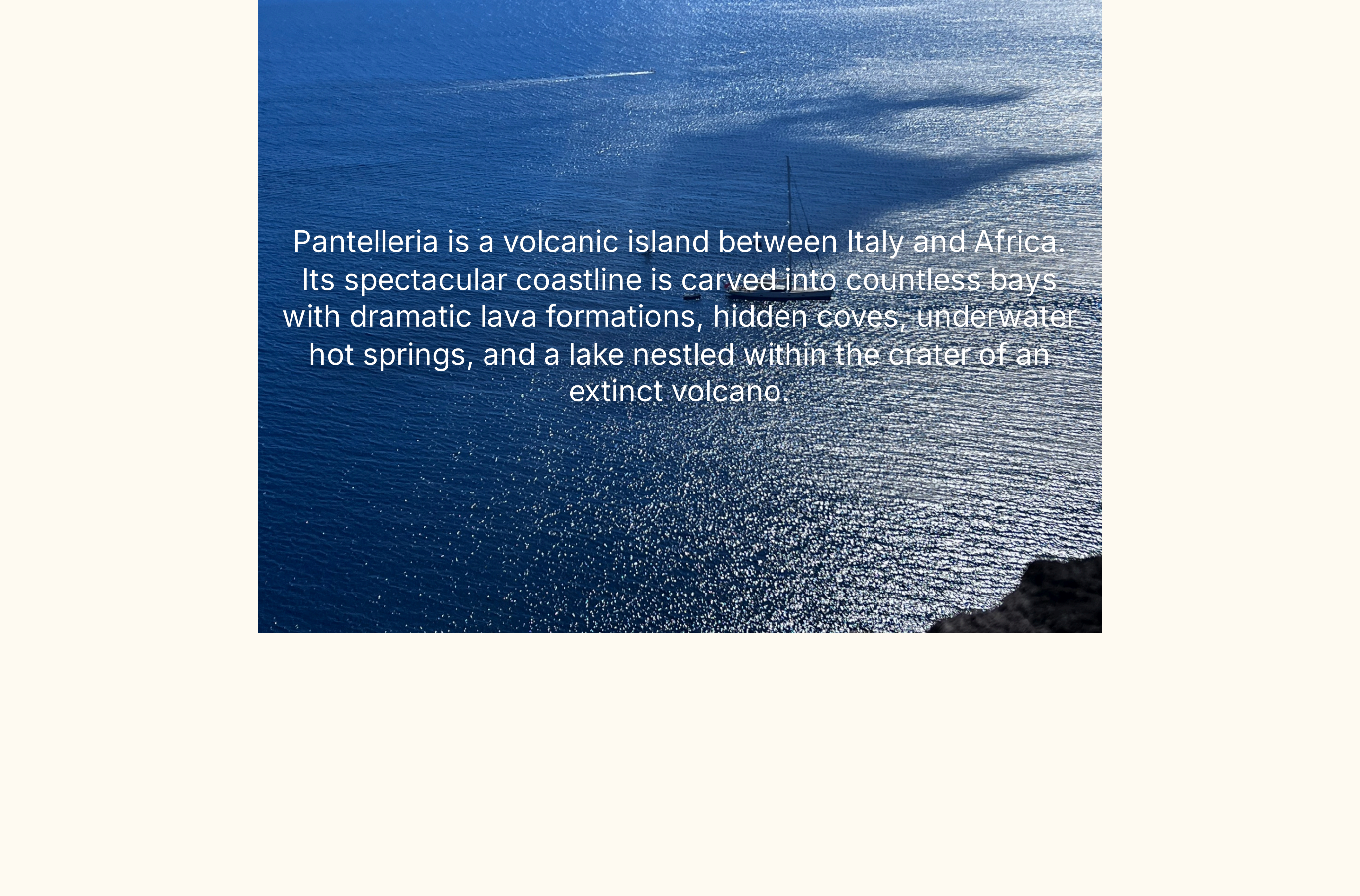
ITALY



THE ISLAND



Pantelleria is my paradise.

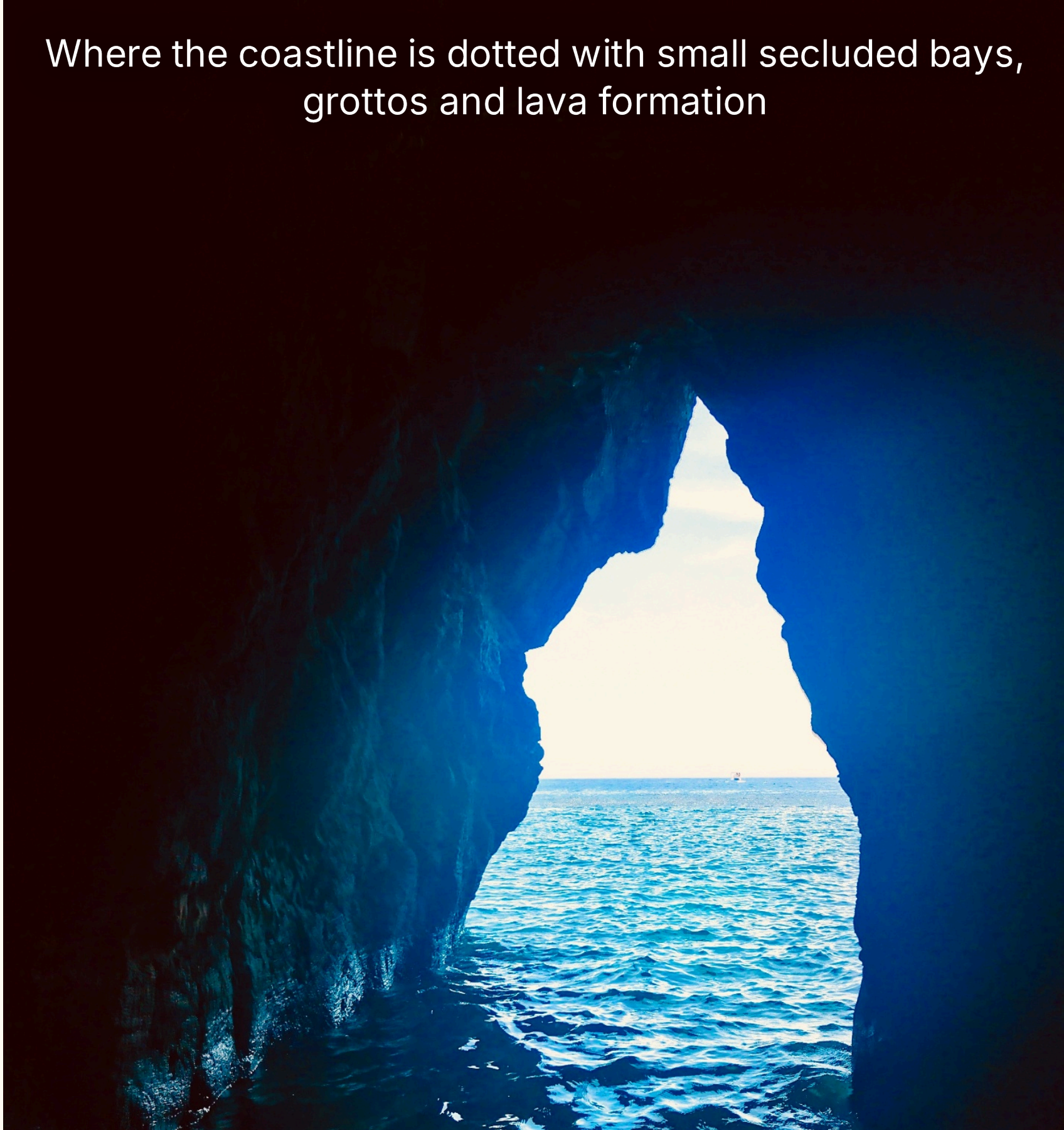
An aerial photograph of the deep blue sea, showing a small boat in the center. The water is a rich, dark blue, and the boat is a small, dark silhouette. The background is a vast expanse of water, with some lighter blue areas in the distance. The overall scene is serene and expansive.

Pantelleria is a volcanic island between Italy and Africa. Its spectacular coastline is carved into countless bays with dramatic lava formations, hidden coves, underwater hot springs, and a lake nestled within the crater of an extinct volcano.

Where the sea is silent, infinite and overwhelming



Where the coastline is dotted with small secluded bays,  
grottos and lava formation







Where I can hide and get lost



Where ancient lava formations have hardened into  
monumental sculptures



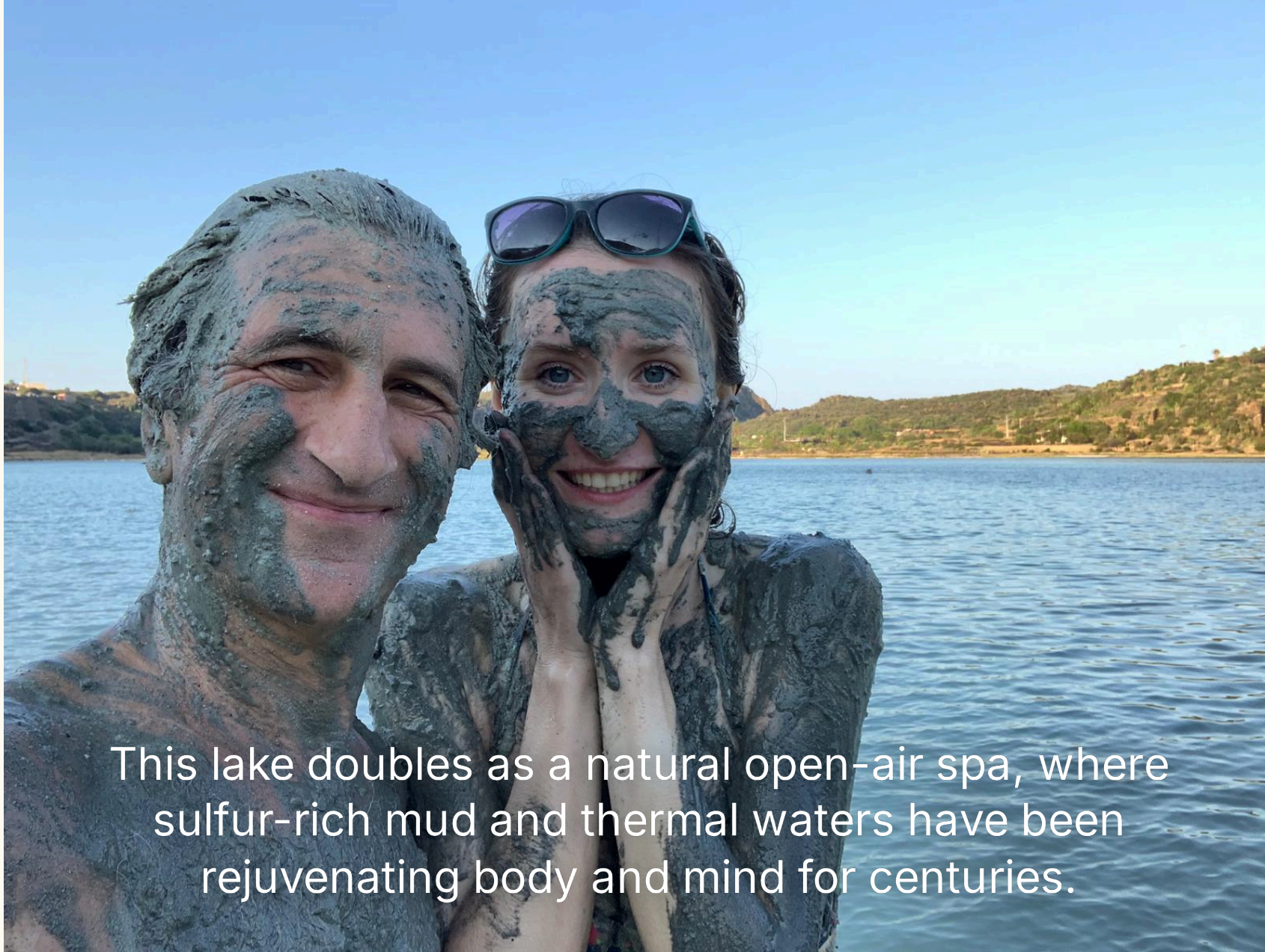
The interior of Pantelleria unfolds through a succession of agricultural landscapes, dotted with unique examples of vernacular architecture and hidden archaeological sites.



Every cultivable inch of land has been transformed into vineyards and caper fields



An extinct volcano cradles a lake known  
as *Specchio di Venere*



This lake doubles as a natural open-air spa, where sulfur-rich mud and thermal waters have been rejuvenating body and mind for centuries.



Villages crown the hilltops, preserving the need for protection against pirates

Here I can discover sacred grounds of  
2000-year old tumbs



A PERSONAL NOTE

I have a house on this island.  
My house is by the sea on the saddle between  
*Cala Tramontana* and *Cala Levante*





It is perched above a charming bay where local legend has it that Hannibal camped with his elephants in 218 B.C. For this reason, I named my property *La Casa dell'Elefante*.



*Cala Tramontana* is intimate and picturesque

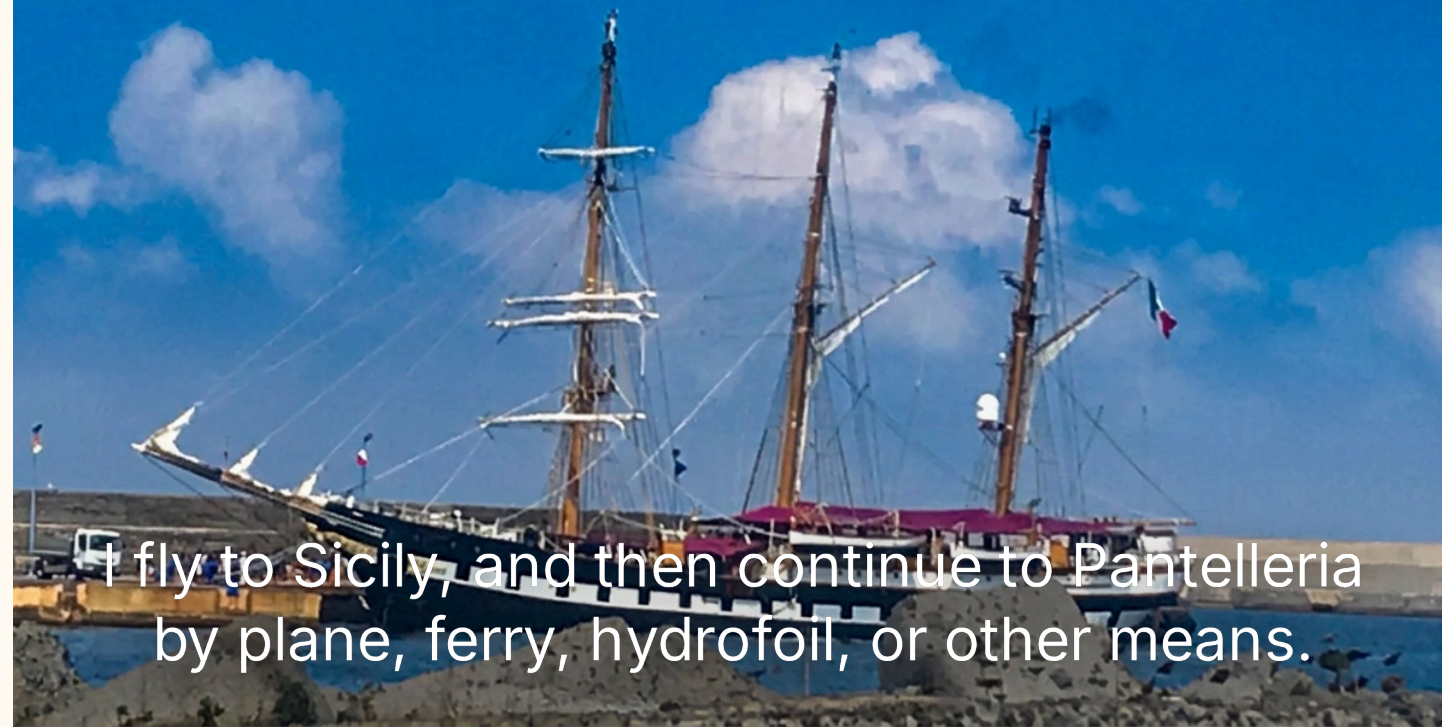


*Cala Levante* is grand and elegant



I have been coming here since childhood

Whenever the pace of New York becomes too much, I escape to *Casa dell'Elefante*.



I fly to Sicily, and then continue to Pantelleria by plane, ferry, hydrofoil, or other means.

.....until I reach my destination



**La Casa  
dell'Elefante**







*La Casa dell'Elefante* is a cluster of stone buildings connected by open patios.



This place is an elegant and organic combination of stones, plants and flowers, animated by shifting sunlight and the gentle sound of sea breezes.

*the Upper Terrace is for contemplation and romantic dinners*



*The Spice Patio is for sipping aperitivi*





*The Blue Patio* is for reading and napping



*The Bouganville Patio is for serious eating  
al fresco*



This patio is equipped with an outdoor kitchen



This big ceramic table outside the kitchen is for breakfast and food preparation





The medieval wood-fired stone oven is for grilling, as well as for baking bread and pizza.







Our kitchen is housed in a separate stone building, and it is fully equipped for any cooking skill

During the day, our piazza is the place for sunbathing



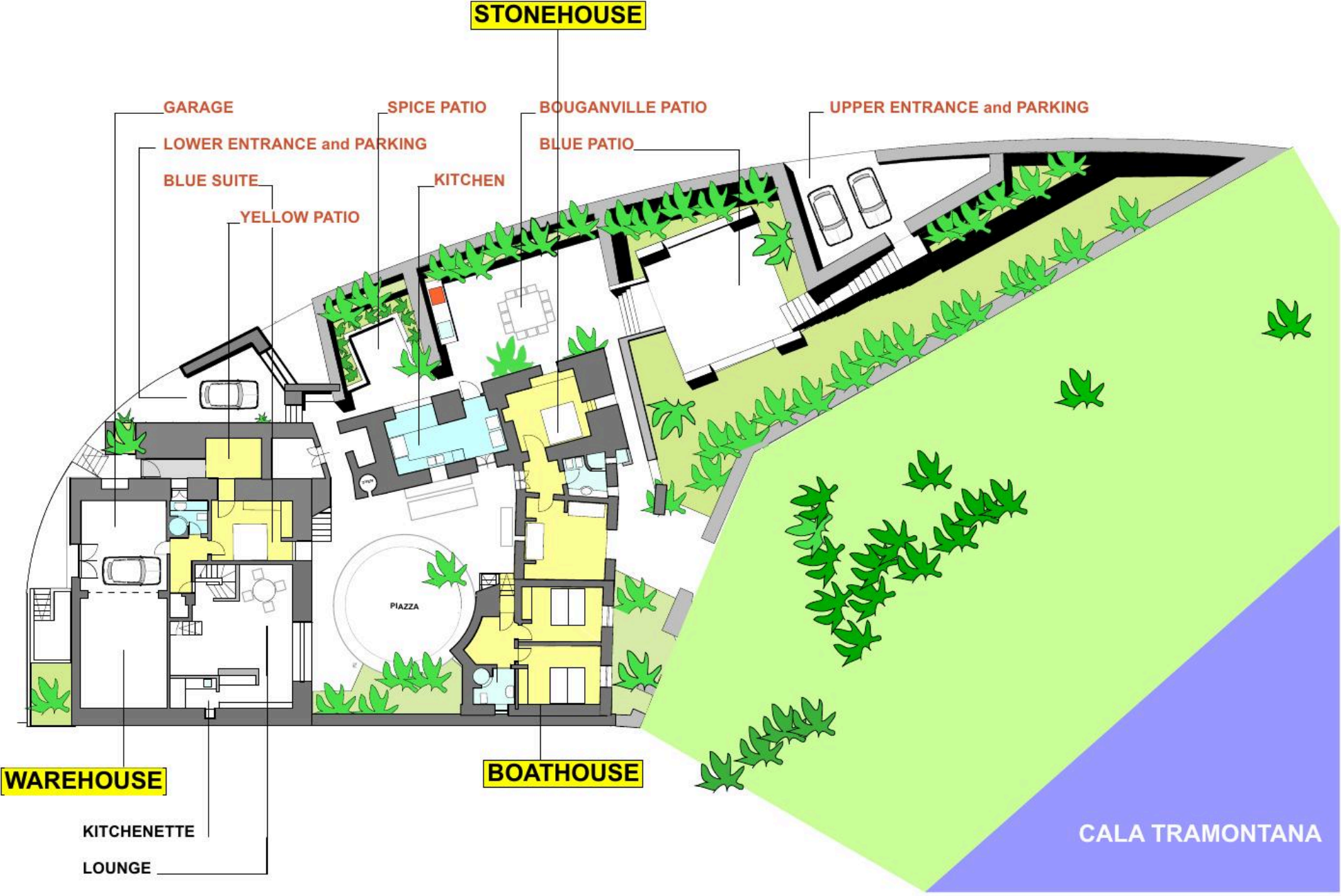


At night it is for dancing and watching the stars

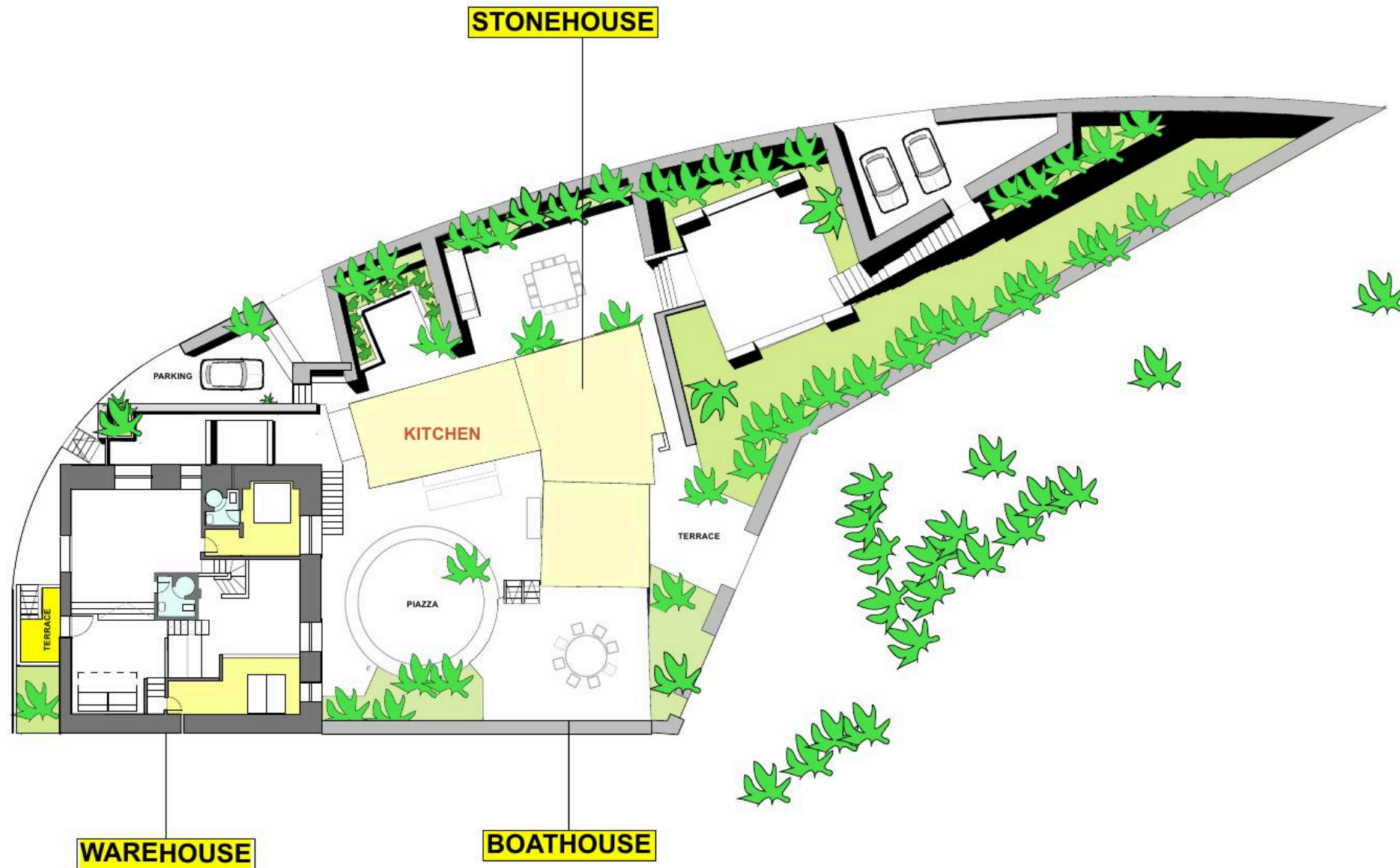
The property resembles a miniature village composed of three independent residences—*Stonehouse*, *Boathouse*, and *Warehouse*.



# LA CASA DELL'ELEFANTE - Level 1



# LA CASA DELL'ELEFANTE - Level 2





*Stonehouse* is the older structure of this property.

it includes a bedroom, a bath, and a second room with a terrace overlooking the bay below



The bedroom has century-old 3-foot thick walls, as well as narrow windows.





This room is called *Camera Obscura*.



The second room is bright and features two twin beds.



It is called *the Room with a View*.







and overlooks *Cala Tramontana*.





The bath is located between the rooms.





Both bedrooms look like boat cabins.



The western room is called *the Atlantic*.

The east room is called *the Pacific*.





A photograph showing a white, rectangular ledge or shelf. The ledge is positioned horizontally and appears to be part of a larger structure, possibly a window sill or a piece of furniture. The background is dark, and the lighting is somewhat dim, highlighting the texture of the white surface. A small portion of a yellow object is visible in the top left corner.

Both rooms enjoy spectacular views of the bay below.





*Warehouse's* street facade features a stucco finish in a color traditionally used on local houses.





The building is a former wine cellar thoughtfully converted into living quarters.











It features a majestic 30-foot high ceiling and includes a kitchenette





The common area includes different spaces equipped for eating, relaxing and studying.



This is the *Royal Suite*.



This room enjoys a beautiful view of the house and the sea.



This is *the Mexican Suite*

...featuring a yellow patio









*The Safari Room*



Together, the property features 7 bedrooms and 5 baths, and can accommodate up to 14 guests





The sea is only a short walk below the house, making it possible to swim at any time of day—or night.









When I am not there, I rent the house to guests who appreciate natural beauty, quality of life, and essential architecture.

...and they always have a ball.





Sometimes I hire a local chef to prepare my meals...



... together with a spice consultant...





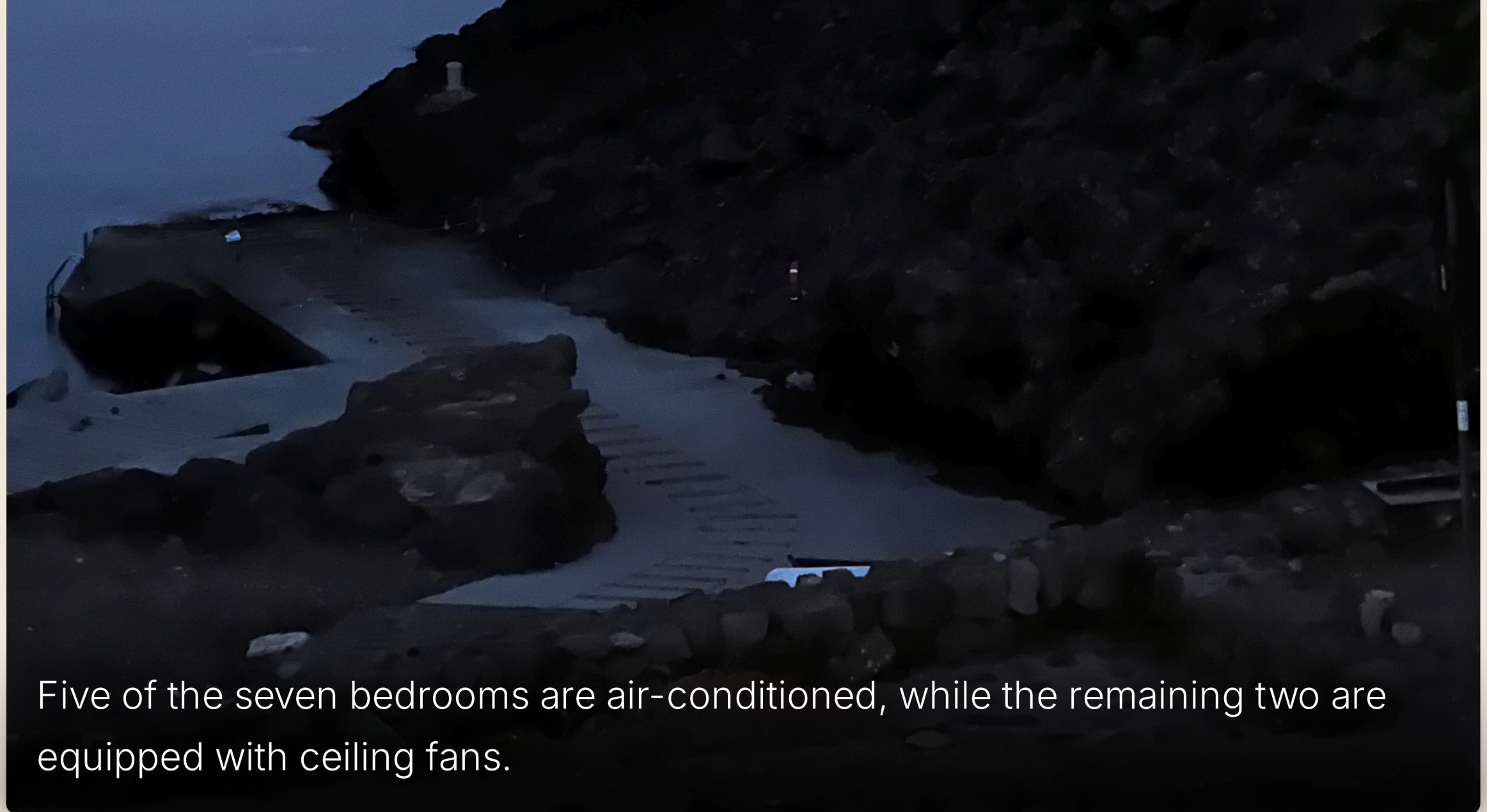
...and, occasionally, a sommelier



*La Casa dell'Elefante* is available for rent from May through October, with a minimum stay of one week.

A photograph of a sunset over a body of water. The sun is a bright, glowing orb in the upper center of the frame, casting a long, shimmering golden reflection down the center of the water. The sky is a deep, clear blue. The water is a darker blue, with some lighter patches near the shore. In the foreground, the dark, jagged silhouette of a rocky coastline is visible on the right side. The overall mood is serene and peaceful.

The property is fully furnished and equipped, and all linens are provided.



Five of the seven bedrooms are air-conditioned, while the remaining two are equipped with ceiling fans.



During May, June, September, and October, guests may rent any of the three residences. During July and August *La Casa dell'Elefante* is rented exclusively as a whole property, making it ideal for large families or groups of friends.





I look forward to welcoming you.

FOR INQUIRIES AND RESERVATIONS

NADINE.PANTELLERIA@GMAIL.COM

## *Pantelleria*

THE BLACK PEARL OF THE MEDITERRANEAN